

# The Ampfield Messenger



*The Parish Magazine of  
St. Mark Ampfield*

**November 2021**

**Vol 71 Issue 11 [www.acnb-church.org](http://www.acnb-church.org)**

**£1**

# **The Parish Church of St Mark, Ampfield**

*Our vision: To be channels of God's love in the world*

## **Ministry Team**

**Revd Vanessa Lawrence** Tel: 02380 736671

**Mrs. Sally Kerson** Tel: 02380 737617

**Mr. Jonathan DeVile** Tel: 02380 736522

For any enquiries about baptisms, weddings or churchyards please contact the parish office, telephone no: 023 8073 7617

Email us at: **[office@acnb-church.org](mailto:office@acnb-church.org)**

Website: **[www.acnb-church.faith](http://www.acnb-church.faith)**

Facebook: **[www.facebook.com/acnbchurch/](http://www.facebook.com/acnbchurch/)**

The office is staffed 9 - 12 noon, Monday, Wednesday & Friday.  
*Please let us know if you have any news of those who are sick, in trouble, leaving or about to arrive*

**Churchwardens:** Mr. Daryl Pugh, Tel: 01794 524307  
Email: [ampfield.churchwarden@gmail.com](mailto:ampfield.churchwarden@gmail.com)

**Secretary PCC** Jennie Edwards Tel: 02380 365041

**Treasurer PCC** Mrs. Pamela Morffew Tel: 02380 411146.  
Email - [acnb@gmail.com](mailto:acnb@gmail.com)

**Any cheques should be made payable to Ampfield PCC please**

**Gift Aid Secretary** Mrs A Jeffery, Tel: 02380 252865  
Email: [nickandade@gmail.com](mailto:nickandade@gmail.com)

**Magazine Editors** Chris & Rob Kerr, Tel: 01794 367104  
E-mail: [cl..kerr@btinternet.com](mailto:cl..kerr@btinternet.com)

**Distribution** Margaret Philpott Tel: 02380 741831

## **DEADLINE: The third Friday of each calendar month.**

Contributions to this magazine are always welcome, however it may be necessary to edit or shorten articles. Note that the views and opinions expressed in this publication are not necessarily those of the editor or the Parochial Church Council. Advertisements in this publication do not carry the endorsement of the editor or the Parochial Church Council.

## Contents

4. Letter from Jonathan
5. Online and In-person Worship - Abbie West
6. Benefice News
8. Steve White - obituary by his daughter Charlie
9. 'That time of year thou mayst in me behold' - William Shakespeare, contributed by Agne
10. What's on
14. The History of Ampfield Village Hall by Julie Trotter
17. Lockdown Fragments - exhibition at Winchester Cathedral
18. A Day to Remember - The London Marathon by Alan Edwards
20. The Fall of the Cedar Tree by Liz Hallett
22. Friends of Chapel Wood by Graham Roads
24. Memorials of Ampfield 13 - contributed by Nick
26. A Kitchen Garden (G4G) by Graham Roads
28. Ron & Stella's Quiz Night
29. Ampfield Neighbours and Romsey Foodbank info.
30. Bishop's Commission for Mission by Abbie West
32. Recipe for Chocolate Brownies by Abbie West
33. A prayer for remembrance
34. Ampfield Parish Council Report by Kate Orange  
The Children's Society - box holders' donations by Heather
35. Tree Planting to commemorate those who have died in the Covid Pandemic  
Remembrance day service details
36. Cartoon by Nigel Babbs  
Answers to Ron & Stella's Quiz Night
37. Local Information
38. Thought for the Month - Reconciliation

**Cover photo** - 'Over the Top' a poppy tribute at one of our Benefice churches, St John the Baptist, North Baddesley, in 2018.

## *Letter from Jonathan*

Dear Friends,

We are at the point of the year when daylight is becoming a precious commodity once again. Of course it happens every year, but oddly, it still surprises me that every year there should be such a shift over the autumn from summer to winter. It seems the same every year but at the same time slightly different. Is it just me or is this a very late autumn? There still seems to be a lot of green on the trees. It is one of my favourite times of year; there is something about the soft quality of the light which is comforting; so as long as the weather holds, it can be lovely. It is living evidence of the miracle, which is planet earth. Christian stewardship of the gifts of creation is something which is increasingly relevant, particularly as governments seem slow to act to curb human activity which is the cause of climate change.

As Her Majesty was overheard remarking recently, there is a lot of talk around the point but it seems that when it comes to difficult decisions the action is slow. It then falls to the citizens to make their own sacrifice and as Christians I would like to feel that we can lead the way on making whatever change we are able to make for our environment. I wonder what our God and Creator thinks about what we are doing to the planet and whether we are doing enough to save it? I would like to think that every small action we can take has a greater cumulative effect for the good our community.

May God bless us in everything we do for the good of our community and preserve what we have for future generations. And my God bless the Queen, that great constant in our lives, may we be mindful that the time we have with her is also precious indeed.

**Jonathan**



# Online and In-Person Worship

As the seasons change, autumn brings with it All Souls day (2<sup>nd</sup> Nov) where we remember those we love who have died (see p.6 for details of our Remembrance Tree). On Remembrance day (11<sup>th</sup> Nov) we remember the members of the armed forces who have died in the line of duty. See p. 35 for details of the whole Benefice service at St. Mark's. There will also be acts of remembrance at:

**Chilworth War Memorial** (On A2, opposite the Chilworth Arm)  
Assemble by 10.45 am for a prompt start at 10.50 am.

**North Baddesley War Memorial**

Parade of uniformed organisations and local dignitaries, plus anyone else who would like to join. Leave All Saints Church, Rownhams Road at 10.30 am and the service around the War Memorial at the church will start at approximately 10.50 am.

You can sign up for our weekly newsletter on the website:

<https://acnb-church.org/main/contactus/#sign-up-for-weekly-news>

## ***This is the regular service pattern:***

### **Sunday at 09:30**

- 1st Sunday – Worship for All, online only
- 2nd Sunday – Communion at St Mark, Ampfield
- 3rd Sunday – Communion at All Saints, North Baddesley and streamed live online
- 4th Sunday – Communion at St Denys, Chilworth
- 5th Sunday (when there is one) – Communion at St John, North Baddesley

### **Sunday at 11:30**

Morning Prayer using the Book of Common Prayer (on Zoom)

**Tuesday at 10:30:** Morning prayer in the glade at St Mark's, bring a picnic chair (in church room if raining).

We are currently in an interregnum. Our main services continue unchanged but please bear with us as we navigate this period. We can still take bookings for weddings, baptisms and funerals but will need to make sure we can book someone to take the service.



**Abbie**

## Benefice News

### Job Announcement

Victoria is excited to announce that she is to be Mission Enabler (communities) for the Diocese of Guildford. Working for the Mission Leadership Team she will provide consultancy services to parishes in the diocese in the area of social transformation, and will be leading and facilitating vision days and supporting parishes in the formation of their Church Development Plans. She will also represent Guildford Diocese within the statutory, voluntary, community and faith sector bodies.

We send our congratulations and prayers as she takes on this new position.

### The Remembrance Tree

We are approaching 'Allhallowtide' the season encompassing All Saints' Eve (Halloween), All Saints' Day (All Hallows) and All Souls's Day which is on 2nd November, when we remember the faithful departed. There will be an opportunity for you to remember loved ones who have died by writing their names on a special piece of paper and hanging them on The Remembrance Tree in St. John the Baptist Church from Saturday 30th October



## **A New Kitchen For The Church**

During the summer months a new kitchen was installed at the church all due to Howdens of Romsey heavily discounting the kitchen as part of their charitable giving. Not only did they supply the units but all the electrical goods and a fridge. It didn't stop there, the actual kitchen was fitted over a number of Tuesday mornings by members of Romsey Men's Shed. The church gave a donation of £250 to the Men's Shed for their sterling work. The other workmen including the electrician, the floor fitter and the tiler all gave their time and labour free of charge.

This project was a community one, as a great number of people donated monies from across Ampfield and beyond, not least our Friends for Lunch diners but also local people who have used St. Mark's Room in the past for a variety of events. We actually raised almost £3000 which is a wonderful tribute to all those kind people who have supported us. Thank you to everyone who was involved and we have now been able to look at resuming our lunch club, Friends for Lunch, early in 2022.

If you should wish to hire St Mark's Room and take full advantage of our lovely new kitchen please contact Sally in the office .



**Kate**

## Stephen White, 1933 - 1921



**M**y father was born in London and moved to Ampfield in 1934, when my grandparents bought the Village Store and Bakery. He attended Ampfield Primary School, St Peters RC School and Clarks College in Southampton where he sat his A Levels.

He declined a commission during National Service opting instead to join the Catering Corp, as he thought it might be more fun! It was here he met my mother Ella, a Queen Alexandra nurse from Glasgow. They married in July 1955.

Shortly after, dad became joint owner of a successful bakery - R Parnell in Winchester. He worked long, hard hours perfecting his skills as a professional baker and confectioner.

He bought land in Knapp Lane in 1960 and built the first 'Stevella' (now 'Chapel Wood House'). I arrived in June 1961. In 1979 he built a bungalow in the garden and lived there ever since.

Following the sale of the Bakery in Winchester, Prices, the bread bakery in Eastleigh were hiring. His first job was greasing bread tins. He had an enormous thirst for knowledge and his persistent desire to know how 'everything worked' led him to quickly be promoted to the Night Manager. The company was taken over by RHM, latterly Mr Kipling Cakes. He ended his career as the Production and Planning Manager and he was exceedingly good at it!

Dad lived life to the fullest. He had many passions; family, friends, sailing, history, reading and travel. He loved all things French, particularly a wee 9 Franc table d'hôte and a bottle (or deux!) of the local plonk.

His exuberance and humour will forever stay with us. He was a wonderful husband, dad, father-in-law, grandpa and friend and I am so proud that he was mine.

**Carolyn (Charlie) Allen**



## **That time of year thou mayst in me behold**

That time of year thou mayst in me behold  
When yellow leaves, or none, or few, do hang  
Upon those boughs which shake against the cold,  
Bare ruin'd choirs, where late the sweet birds sang.

In me thou see'st the twilight of such day  
As after sunset fadeth in the west,  
Which by and by black night doth take away,  
Death's second self, that seals up all in rest.

In me thou see'st the glowing of such fire  
That on the ashes of his youth doth lie,  
As the death-bed whereon it must expire,  
Consum'd with that which it was nourish'd by.  
This thou perceiv'st, which makes thy love more strong,  
To love that well which thou must leave ere long.

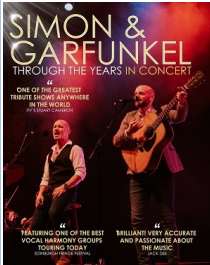


**Sonnet 73: William Shakespeare**

**Contributed by Agne**

# What's on

## Plaza Theatre Romsey



Visit

[www.plazatheatre.com](http://www.plazatheatre.com) for more details and booking.

Simon & Garfunkel Through the Years

By Bookends

Thu 4th Nov

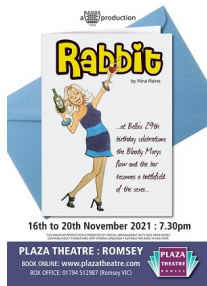
2021 | 19:30 | £18.00

Romsey Comedy Club

By Chuck

Sat 6th Nov

2021 | 19:30 | £13.50



Rabbit

By Nina Raine

Tue 16th - Sat 20th Nov 2021 | 19:30 | £14.00



**Let the Messenger  
know if you have  
an upcoming event  
in or near Ampfield  
and we will include  
it in our 'What's  
On' section.**



# **What's on**

**Ampfield Village Hall**

**&**

**Bumblefly Theatre & forest forge theatre company  
present**

## **Jack & The Beanstalk**

*Entertainment for all the family*



**Wednesday 15 December 2021**

**Starting at 6pm prompt**

**(Doors open at 5.30pm) Tickets (unreserved):**

**£8.00 Adult**

**£4.00 Children**

Performance will last about 1 hour without an interval.  
Tickets available from: **Martin Hatley 07970 501050**  
Or Email: **VillageHall@ampfield.org.uk**

# **What's on**

## **Ampfield Village Hall QUIZ NIGHT**

**? ? ? ? ? ? ?**

**Join us at our fun Quiz Night with Raffle!  
By popular demand, the Ampfield  
Quizmasters are back!**

**Friday 26 Nov. '22 at 7.30pm  
(Doors open at 7pm)**

**Enjoy our ever popular friendly quiz.  
Come as a team of up to 6, or in smaller numbers  
and teams will be made up on the night.**

**Bar available and if you wish, please bring along your  
own picnic supper to enjoy during the interval or  
throughout the evening  
Cost £5 per person inc. 'bar' snacks on tables**

**BAR**

**Prizes for winning table.**

**RAFFLE**

**Tickets available from  
Martin Hatley 07970 501050  
Or email [villagehall@ampfield.org.uk](mailto:villagehall@ampfield.org.uk)**

**All proceeds to go to the Village Hall Funds – a registered charity.**

# **What's on**

**The Ampfield Market**  
(Established in 2000, now in its 21<sup>st</sup> year!)  
**Saturday 6th November**  
**From 10am to 12noon**  
in Ampfield Village Hall  
(SO51 9BJ)

Our Market has a great reputation, we regularly sell:-  
Fresh fruit and veg, Fairtrade foods, jams, chutneys  
and pickles, cakes, biscuits and scones, plants and  
fresh flowers, cards and wrapping paper, books,  
antiques, unusual crafts, jewellery, children's clothes,  
toys, honey, seasonal surprises, bric a brac and  
much much more.

**Fresh coffee and a wonderful selection of  
cakes will be served all morning  
in the Garden Room**

Parking and admission are always FREE  
All proceeds support the Village Hall  
Registered charity no.1057353  
Contact Julie on 023 80254587 for table bookings and  
information.

**Next date**  
**Christmas Market**  
**Saturday 4th December 2021**

# The History of Ampfield Village Hall

**M**artin and I moved into the village in December 1990 and we quickly got involved in various village activities as soon as we could. It was such a delight to be living in this beautiful area, we considered it important to give something back to our community in return. So it was that we became involved in the village hall improvements in 1992 - I can't believe it's almost 30 years ago already! I kept a detailed record of all the work that was carried out, including many photo graphs and I'm so glad I did. I'm pleased to be able to share this with you over the next few months. I hope you will enjoy an insight into all the hard work that has been carried out over many years to provide our community with the lovely village hall that you see and use today.

## Ampfield Village Hall 1952 -1995

**1952** The Ampfield WI Hall was built in 1952 on land given to the WI by the Faber family. It was funded by a loan which was paid off by the WI with fund raising events, generous help from the Parish Council and much hard work. However, over the course of 40 years and with little improvement, the Hall was becoming very run down and in desperate need of essential maintenance. Reflecting on her first W.I. Meeting in the Hall in 1963, Joan Hatley wrote

*'We huddled together in the cold committee room, to the left of the stage, dressed in winter coats, fur lined boots and one glove, ( the other hand was left cold and free for holding a pen ! ) There was just one small inefficient electric fire to keep us warm. I then thought of the kitchen with its wooden draining board - no matter how much we scrubbed it, it never looked clean. There was a copper to boil the water and how thrilled we were when we had a proper urn. Anyone using the Hall for meetings in the winter found sitting under the radiant bars of the ceiling heaters gave you a hot head, but did nothing to help your cold feet '*

Cont. ...

...Cont.

1992 With diminishing membership and increasing costs the WI decided to relinquish their responsibility for the Hall and it was handed over to a steering committee formed from W.I. members and other Hall user organisations. It was agreed that the Hall would be leased to the committee for a period of 35 years at a rent of £1 per annum. The WI reserved the right to use the hall for 52 days of each year and retain exclusive use of one wardrobe !

Over the 4 years that the difficult and complicated legal process was taking place, the committee and enthusiastic volunteers began major works to improve this important village amenity, making sure that at all times it still remained in use. Overgrown trees and shrubs were cut down to improve the drainage which helped to dry out damp walls. Grants provided by TVBC and continued financial support from the Parish Council helped to fund new heating, lighting and urgent repairs to the roof.



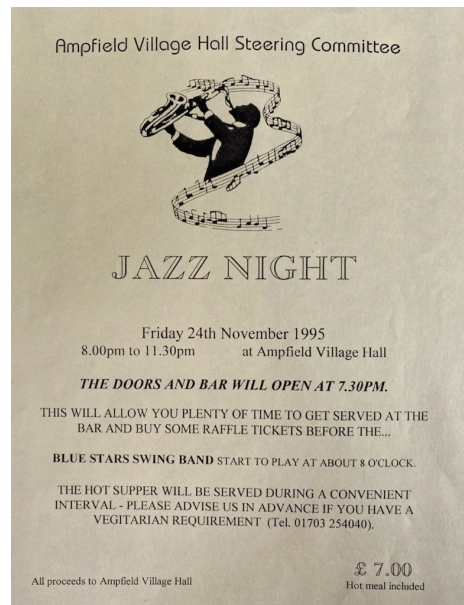
Cont. ...



...Cont.



1995 The new stage curtains were fireproofed, toilet walls and ceilings were cleaned and repainted, a new water main was installed in September 1995. In October 1995 the first fund raising event - a sponsored family walk was held to raise some necessary funds for the work. In November 1995 a Jazz Night featuring the Blue Stars Swing Band took place and a hot supper was served.



**Julie Trotter**



## Lockdown Fragments

**I**s the name of this window designed and made by Sophie Hacker, who also made the window at St. Johns. It will form part of a centenary exhibition of the British Society of Master Glass Painters in Winchester Cathedral from 4th - 25th November. The inspiration for this masterpiece came from the great west window in the cathedral. Look carefully and you will see memorable symbols from lockdown eg. Captain Tom, HNS, unmute and even a toilet roll!



## A DAY TO REMEMBER

Imagine a world without enmity, which is supportive, full of bonhomie, bringing relatives and friends together, as well as people you've never met before; and which is an adventure, an unforgettable and inspirational experience, accompanied by a cacophony of sound, whether it be music, cheers, or shouts of encouragement. The idyll exists once a year, in of all places, London, on the day of the Marathon. It is, in effect, a gigantic street party, spread over 26 miles and lasting for some 7/8 hours or even longer. London at its most benevolent. It is surely the most joyous event in the sporting calendar. Its atmosphere is uplifting and totally unique.

The scale and scope of a triumph of organisation takes the breath away: over 40,000 participants, aged 18-80, countless stewards, the times of departure synchronised to the minute over three separate routes early on, with water stops every mile. There were people wearing a variety of masks (including the faces of rhinos and elephants - how do they breathe properly?), and colourful, outrageous and laugh-inducing costumes.



Photo Courtesy Save the Rhino International

Cont....

...Cont.

The selflessness, courage and fortitude of all those taking part is a marvel. The marathon – indeed any marathon – is not a venture to be undertaken lightly. It demands much of physical and psychological resourcefulness. Many months of practice, amounting to hundreds of miles in all, are required. The runners put their bodies on the line to raise funds for a huge number of charitable causes. Many do so in memory of loved ones who have passed away in the recent past, or longer ago. Some of the causes tug at the heartstrings more than others. We ate our hotel breakfast next to a group raising funds for children with cancer.

We have now watched it twice. The first time was 16 years ago; the most recent was last weekend, when our daughter ran the course, in memory of an uncle who lived in the parish. She was following in the footsteps of an older brother all those years ago. The journey as we made our way to various locations along the route of the Jubilee Line was undoubtedly risky in this Covid era, even wearing a mask, but the event and its purpose, demanded that it be supported. And how all those people, on and alongside the road, enjoyed themselves!



**Alan Edwards**



## The fall of the cedar tree

The churchyard used to have three cedar trees (are you aware there is a second one on the roadside border near the lower gate). One came to a disastrous end in the great storm of January 1987. The magnificent specimen close to the east end of the church is a cedar of Lebanon (*cedrus libani*), growing larger year on year. The other two were/are a slightly smaller variety, *cedrus deodara*, but still wonderful trees. The one we lost stood on the triangle of grass to the right inside the top gate, close to the car park rhododendrons-which have admittedly grown much bigger and thicker now they don't have to compete for the soil nutrients taken up by the tree.



Well, the cedar fell right across the main path from the car park with its top branches among the gravestones. Something had to be done about it fast-and as warden it was my responsibility to think of that 'something'. Luckily I had a friend, David Hayter, a clockmaker and craftsman in wood who had a workshop at Green Lane Farm, and he knew a man with a mobile sawmill. We made an arrangement that David could have the timber in exchange for paying all the



costs. Geoff Wood and a team from the congregation helped, and soon the sawmill arrived and set up for business in the car park. The photos will give you some idea of what followed. First the smaller branches were removed using a chainsaw, and it could be seen that although the top of the tree was well in among the graves, not a single gravestone had been smashed and only a couple of them were slightly wobbly.

Cont. ...



...Cont.

Had it fallen literally an inch of two either way, it would have been a very different story—thank you, Lord! The roots had been lifted out of the ground leaving a huge hole, which had filled with the torrential rainwater.

The next job was the slice through near the base of the trunk to let the roots fall back into the ground. This they did, causing an enormous splash which drenched everyone standing nearby. I was a bit further away and could just chuckle callously at their dismay!

Thereafter the trunk was cut into manageable lengths and manhandled to the sawmill, where each was cut into planks on the spot. David was able to load these into his trailer and take them home to season in stacks in his garden. The whole exercise took a remarkably short time.



The first thing I did afterwards was to count the tree rings as accurately as possible, and I made it at least 117 years old. This takes us back to the time of the Revd Frewen Moor, and may be earlier, in which case it could have been planted by Sir William Heathcote when the church was first built. We know that both men planted trees in the churchyard. It was a sad loss of one of our very special trees, but that was not the end of the story. The old stump is rotting fast and is well hidden now among the bushes. However, when the wood was duly seasoned, David Hayter presented us with



the gift of a table to go into St Mark's Room, which had been built by then, and he also made the clock on the wall There — both from the wood of our cedar—a lasting reminder.

**Liz Hallett**



# Friends of Chapel Wood

The Friends have enjoyed two good working parties as we put behind us the loss of the wood in September. The first was to concentrate on making the seats for the dipping platform.

However, on the day, the weather forecast was so dreadful that we decided to call it off.

Sigh of relief until about 09:30 when Nick appeared at the door saying, as it wasn't actually raining, we could find and cut to size the cross sections of wood to make the base for each seat. He was right, of course, so we set off.



We had not been on site ten minutes when another couple of Friends turned up, saying as it was not actually raining they thought they might be able to make a start. Then another, then another, until we had almost the entire team out, beavering away throughout the morning that had been cancelled. (There must be a message in here somewhere!) By the time we had finished, we had built a mini



open-air theatre based around the dipping platform. We had also eaten a bunch of home-made chocolate biscuits and had a very enjoyable time in the process.

Cont. ...

Cont.

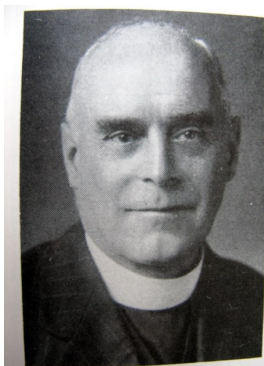
On the second working party we turned our attention to creating a new vista from the rear of St Mark's Church. The plan was to work together, starting along the footpath below the west end of St. Mark's, moving towards the pond, cutting down the rhododendron as we went. The arisings would then be moved up to the bonfire pit. This was by no means an easy task as it meant climbing up the hill to the church on every trip and there were many trips! Thankfully, this was soon re-organised into a series of relays, which made life a lot easier.

Meanwhile, a couple of our more technically minded members set out to replace the old gate onto Chapel Hill, which our uninvited visitor had finally written-off. After an initial hiccough due to a deficit in solid posts, the whole exercise went very smoothly, leaving the woodland with a new gate that looked as if it had been there for years.

Taking both working parties together, it was good stuff. You can learn a lot about people when you are working with them like this. You understand who likes a solid professional finish and who prefers 'rustic' who likes stuff level and who is content simply that it doesn't fall over. But, perhaps, what is most striking is the constant good-natured banter.



**Graham Roads**



## **Memorials of Ampfield 13**

### **By the Reverend Lake**

**F**or two centuries the history of Ampfield has been closely connected with that of Ampfield house. It might be of interest therefore to give some particulars about the various owners of the Estate.

So far as we can go back the story opens with the marriage of Benjamin White, who sprang from an old Hursley family, at Baddesley on April 8 1716, to Sarah Smith of Ampfield, whose parents it is supposed were the original owners of the site of the present Ampfield house. This would explain the designation "Smiths Meadow" given to the pasture opposite Ampfield House.

Benjamin White is frequently mentioned in the records of his times, as a man of substance and a purchaser of land. He died January 5 1755 and was buried, together with his wife, on the North side of Hursley Church.

His nephew and successor, Joseph White who was born in 1718 was already possessed of property in the village, and is said to have erected the present Ampfield House on land belonging to Elizabeth Smith.

Joseph White was succeeded in 1765 by his elder brother, Benjamin, whose marriage license, dated Dec 27 1739 runs:- Benjamin White of Hursley, gent. aged 23 and Mary Colson, of the same, aged 22. The bride came of an old Copyhold family of Hursley.

Cont. ...



...Cont.

Benjamin White died at Ampfield Dec 21 1779 and was buried in one of the great square tombs at Hursley. His property devolved upon his eldest son Benjamin, born 1747, a gentleman devoted to sport. A descendent of his Mr HT White of Derby relates that about the year 1781 a subscription hunt was instituted in this parish, and the hounds or harriers, given by Mr C Potter, were kept at Ampfield on a piece of ground rented from Mr Benjamin White, described as abutting on the north east, and west sides of Ampfield common, where a kennel and stables were erected and Mr White acted as Master.

Thomas Kynaston, the huntsman, was to be provided annually with a green mohair shag coat, a pair of leather breeches, a gold-laced hat, and a pair of boots at the expense of the subscribers, and he was paid £23 annually. Mrs Suckling may have referred to a descendant of Kynaston when she says in a letter to Mrs Awdry: " I remember old Sawyer the huntsman living in Ampfield village, and coming to church in a green coat and brass buttons."

Benjamin White's marriage was thus referred to in the Winchester and Salisbury journal of Nov 6 1780:- "On Thursday last Mr White of Ampfield, His widow continued in possession of Ampfield, until her death in 1866, when their son, the Rev John White, vicar of Timsbury, succeeded to the estate, and died in 1885, having previously let Ampfield House to Sir Alexander Grierson, Bart., and subsequently to General Sir Thomas Reed.

In 1905 the estate was sold to Mr David Faber, who has remained in possession to the present day.

**Contributed by Nick**

## A Kitchen Garden (G4G)

**A**lthough they bring with them the realisation that for another year summer is virtually over, the autumn months are an exciting time in the kitchen garden. It is a time for clearing away the old and preparing for the new. It is a time to revisit the whole kitchen garden landscape. In those plots where production has effectively finished, it is a time to remove the top growth debris before disease can set in. With the plants gone, the weeds and pests are more easily identified and dealt with; anything that helps keep pests and disease to a minimum is a bonus.



Of course, some crops are still performing well for much of this period and a programme of maintenance will be rewarded with a better overall crop. But like so many things, it is a balance between optimizing fresh taste and achieving higher yields. We have found though that as we have got crinklier, taste wins hands down. See 'Fried potato and autumn veg.' below.

Whilst clearing out beds, there are a couple of interesting points to look out for. The first is nitrogen fixation on the roots of the beans. If you look at a bean root, you can see tiny white nodules. These are not part of the bean plant *per se* but are evidence of a symbiotic relationship between certain bacteria and the plant. The nitrogen fixed in this way help the bacteria but when the plant dies the nitrogen is released back into the soil and becomes available for other plants. Thus, it can be a good idea, when clearing beans, to cut them off at soil level and leave the roots in the ground.

Cont. ...

...Cont.

The other point is to consider growing green manure wherever there is an empty bed. The success of cropping next year is in no small way connected to making improvements to the fertility of the soil over the winter. Packets of green manure seeds are widely available and fulfil a very similar function to nitrogen fixation. The young plants, of which many will be legumes, are simply dug into the ground in the spring.

There is a similar story in the greenhouse. As the rate of growth slows, it might be worth picking the balance of the crop of tomatoes and cucumbers whilst it is in good condition. The best can be used uncooked, with the remainder preserved for the winter months. Possibly this is the most exciting aspect to this time of year, the thought of crunchy tasty pickles or spicy jams livening up the winter menu, all washed down by a glass of something or other. The other advantage to clearing the greenhouse early is that, with music, a table and chairs and perhaps a small barbecue, it makes a great place to sit on a sunny winter's morning!

For what to do this month in the kitchen garden, paste into your browser <https://www.rhs.org.uk/advice/in-month/october>. Please contact Rob and Chris K to exchange ideas with your own stories, tips and particularly your own recipes?

**Graham Roads**



### ***Fried potato and autumn vegetables***

#### **Ingredients**

1 lb of potatoes (preferably charlotte)

8oz cavalo di nero

1 leek

Tablespoon of grated parmigiano reggiano

#### **Method**

Peel potatoes, roughly dice and par boil for two minutes

Remove centre stalk from cavalo, roughly chop leaves, parboil to soften if necessary

Remove outer leaves and roots from leek, par boil to soften

Roughly mash potatoes, add cavalo and leek. Mix well. Add salt and pepper to taste.

Heat some light oil in a frying pan and fry gently until cooked.

Sprinkle the parmigiano over the top

Place in a hot oven until the parmigiano has melted.

## **Ron and Stella's Quiz Night**

1. What is the currency of Denmark?
2. Which football club plays its home games at Loftus Road?
3. In which century was the Buttercross in Winchester erected?
4. What was the Turkish city of Istanbul called before 1930?
5. In what year did Tony Blair become British prime minister?
6. What was the old name for a Snickers bar, before it changed in 1990?
7. From what grain is the Japanese spirit Sake made?
8. What's longer, a nautical mile or a mile?
9. In what decade was pop icon Madonna born?
10. What is the most sold flavour of Walker's crisps?



***Answers on page 36***

In response to Covid-19  
**AMPFIELD NEIGHBOURS**

working with **unity**

The Test Valley Borough Council Volunteer Support Group

A group of Ampfield residents have come together to help as volunteers working with Unity during the Covid-19 pandemic. Unity is the Test Valley Borough Council Volunteer Support Group. If you live in Ampfield and need help with collecting prescriptions or shopping

**contact**

**Unity on the Test Valley Community Helpline -**

**0330 400 4116**

**or**

**UnityC-19@unityonline.org.uk**

Someone from **Ampfield Neighbours** will be in touch.

## **Romsey Food Bank in the Pandemic**

During the COVID-19 epidemic the food bank is now more important than ever. ACNB churches can also help you access the Food Bank service if you need it.

The epidemic puts Food Banks under great strain. Please donate as much food as you can to support their work at this time.

***Donations can be taken to any of these collection points\****

**Romsey Foodbank**

Monday, Tuesday and Wednesday

1030 - 1230.

**Waitrose donation point for customers**

(shop opening hours)

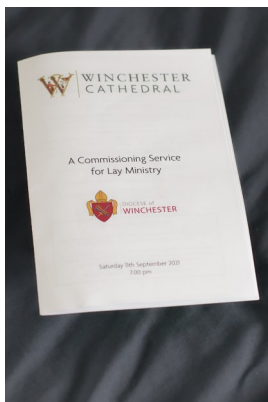
**Community Life Centre,**

**Flemming Avenue, North Baddesley**

10 - 12 Mon - Fri

\*All church collection points are now closed, until restrictions are lifted.

# Bishop's Commission for Mission



As mentioned in last month's edition, Mark and I were recently commissioned in Winchester Cathedral as Lay Worship Leaders in the benefice. It was a lovely service; we were delighted that Victoria and Vanessa were able to attend to support us and have been touched by the messages that we have received. We have also been asked a few questions about what it is, what it means and what we will be doing. Here are some answers.

A few years ago the Diocese of Winchester introduced training for lay people feeling called to be more involved in ministry in their local church. The training equips and inspires people to be more confident in their ministry within the church and community. St Paul tells us that we are not all called to the same ministry so people can be trained as Worship Leader, Pastoral, Prayer Champion and more – all of which fall under the banner of the “Bishop's Commission for Mission”. Once someone has completed their training, including safeguarding training, they are commissioned by the Bishop to carry out that ministry for five years.

Mark and I did the Worship Leader training in autumn 2019, received a temporary commission in 2020 and should have been formally commissioned in the Cathedral in October 2020. That service was postponed due to COVID and we were formally commissioned in September 2021.

Prior to the training we had been playing for Worship For All services at All Saints and were also starting to get involved in planning and leading the services. We had thought about attending the Worship Leader training before but it hadn't seemed like the right time. In 2019 we discovered that the autumn sessions would be at All Saints – God was telling us it was the right time! The eight sessions

Cont. ...

...Cont.

Involved thinking about our calling, small-group work and looking at topics including planning and leading services, music and inter-generational worship. Our weekly homework was to reflect on the session and, after the last session, we had to submit a personal reflection on our experience.

As a result of our commission we can lead non-Communion services such as Worship For All or Morning Prayer; unlike Licenced Lay Ministers (like Sally and Jonathan) who have done far more training, we can't preach or do all that they do. We are now part of the ministry team of the benefice and our main focus is Worship For All. We're also not the only BCMs in the benefice.

Gill Watkin did the Pastoral training in the autumn of 2020 and was formally commissioned in October 2021. Gill decided to do the training after discussions in a Worship For All service about how the church could reach out to the needy in our community. She writes: "I learnt how to conduct a pastoral visit and to show the love of God to those I am visiting by offering prayer and Christian non-judgemental support. I feel it is particularly important at this time that the church has a presence in the community; I am leading the newly opened Welcome Café at All Saints as a place to invite people to come for company or a confidential chat if needed."

**Abbie West**



# Chocolate Brownies

When I was at school each class chose a charity for the year and had to fundraise for it. A cake sale was always a good bet. A friend in another class always made these brownies and, once she had given me the recipe, I did the same. For years after I left school I never thought to make them. Then, my sister asked me to make them for the afternoon tea that was part of her hen night – she had seen me make them plenty of times for school cake sales but, being at a different school, never got to eat them! Since then, I have made them quite frequently and they always go down well.

**Ingredients:** Makes: 12 or 16

- 2½ oz butter/margarine
- 2 oz dark cooking chocolate
- 2 oz chopped dark chocolate or walnuts depending whether you want extra chocolatey or nutty (I go for extra chocolatey)
- 6 oz caster sugar
- 2½ oz self raising flour
- 2 eggs, beaten
- ½ tsp vanilla essence



## Method

- Preheat the oven to 180°C and grease and line an 7" square tin (including the sides)
- Melt the butter/margarine and the cooking chocolate
- Add the sugar to the melted mix
- Sieve the flour into a bowl and stir in the beaten eggs, vanilla essence and chopped chocolate/walnuts
- Beat the chocolate/butter/sugar mixture into the flour/egg mix until smooth and fully combined
- Pour into the tin and bake for 35mins until risen, the top is starting to crack and a tester comes out clean
- Leave in the tin for a minute or two, then lift out using the greaseproof paper and turn out on to a cooling rack
- Leave to cool then cut into 12 or 16 pieces



## A prayer for remembrance



O God of truth and justice,  
we hold before you those men and women  
who have died in active service:  
in Iraq, in Afghanistan and elsewhere.  
As we honour their courage and cherish their memory,  
may we put our faith in your future;  
for you are the source of life and hope,  
now and for ever.

**Amen.**



# Ampfield Parish Council

Ampfield Parish Council met on 11 October. Through grants from our County Councillor Alan Dowden, and Borough Councillor Martin Hatley, we are providing a new AED (automated External Defibrillator) at Ampfield Pavilion. We give thanks to our electricians Redington Home Services, who will fit it free of charge. It will be available to the public at all times as it will be fitted to the outside of the building. This is in addition to the existing two AEDs managed by the parish council (located at the Village Hall, and Potters Heron). South Central Ambulance service have details of the defibrillator locations and access codes, and if appropriate, they will direct 999 callers to them. We have put a user guide on our website, but the machines are fully automated and can be used by anyone, without training.

The Mayor of Test Valley will be visiting the parish for a Tree Planting Ceremony to commemorate those affected by COVID-19. Parishioners are welcome to attend. The Mayor will also open our new dipping platform. The ceremony starts at 11 am in Chapel Wood on Tuesday 26 October. St Marks will provide light refreshments afterwards (see next page).

Friends of Chapel Wood have constructed some seating near to the dipping platform and boardwalk. This is available for the primary school to use during visits, as well as for the public.

The next Parish Council Meeting is at  
7pm on Monday 8 November 2021  
at Ampfield Village Hall.

Kate Orange  
Ampfield Parish Council



[clerk@ampfield.org.uk](mailto:clerk@ampfield.org.uk)  
[www.ampfield.org.uk](http://www.ampfield.org.uk)



## The Children's Society

A very big thank you to all The Children's Society box holders for your kind donations, (I know I have been unable to collect some boxes this year), all relevant boxes have now been opened and counted.

I am pleased to let everyone know that I have been able to bank :-  
£383.12

Thank you all for your continued support.  
Bless you  
**Heather**



## Tree Planting in Chapel Wood

On Tuesday 26th October the Mayor of Test Valley, Cllr Mark Cooper, planted an oak tree in remembrance of those who have lost their lives to the Covid-19 pandemic & to gratefully recognise the many local people who gave

their time and support to help others. The Mayor also opened our new pond-dipping platform and everyone enjoyed scones and coffee in St. Mark's room afterwards.



## REMEMBRANCE SUNDAY AT ST MARK'S

### 14 NOVEMBER 2021

There will be a Remembrance Sunday Service at St Mark's at 9.30am on the 14 November. This will be a whole Benefice Communion Service and afterwards we can walk up to the War Memorial to lay wreaths, have a short service and share the two minutes silence. The names of those brave Men of Ampfield who perished in the two World Wars, and also the American Airmen who died in the plane crash in Ampfield Woods, will be read out at the service in Church and at the War Memorial.

All loose change on the plate at the service and at the War Memorial will be sent to The Royal British Legion. Please join us for this moving Service.





## Answers to Ron and Stella's Quiz Night

1. Krone.
2. Queens Park Rangers.
3. Early Fifteenth.
4. Constantinople.
5. 1997.
6. Marathon.
7. Rice.
8. Nautical Mile. It is 1.15 Miles.
9. 1950's (1958).
10. Cheese and Onion.

## Information

If you need any Zoom meeting links, would like to join in with readings or intercessions, would like prayers said for you or someone you know, or would just like to comment, please email [joinin@acnb-church.org](mailto:joinin@acnb-church.org).

### **Nextdoor.co.uk**

Neighbourhood hub for connecting with local services.

### ***Online Facebook groups:***

#### **Romsey News and Information Group**

The original Facebook Group for Romsey.

#### **Romsey Garden, Nursery & Plants, Info. Sharing etc.**

Good source of local plant delivery and availability, seeds and growing information.

**Hampshire Coronavirus Helpline - 0333 370 4000**

**Safeguarding Vulnerable Adults - 0300 555 1386**

**Romsey Community Pantry - 01794 522106**

**Romsey Foodbank - [www.romsey.foodbank.org.uk](http://www.romsey.foodbank.org.uk)**

**Frontline Debt Advice - 02380 552866**

**Southampton Basics Bank -**

**[www.southamptoncitymission.co.uk/basics-banks](http://www.southamptoncitymission.co.uk/basics-banks)**

### ***Local Representatives***

Member of Parliament: Caroline Nokes; Phone: 01794 521155

County Councillor: Alan Dowden; Phone 02380 266458

TVBC Councillor: Martin Hatley; Phone: 02380 254040

Ampfield Parish Council: Chair Bryan Nanson; Phone: 02380 267760

\*\*\*\*\*

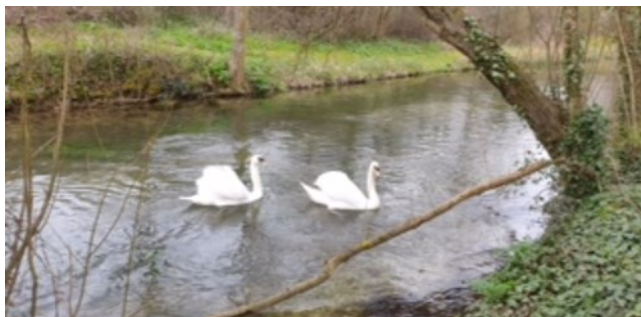
# THOUGHT FOR THE MONTH



## Reconciliation

When you are standing at your hero's grave,  
Or near some homeless village where he died,  
Remember, through your heart's rekindling pride,  
The German soldiers who were loyal and brave.  
Men fought like brutes; and hideous things were done,  
And you have nourished hatred harsh and blind.  
But in that Golgotha perhaps you'll find  
The mothers of the men who killed your son.

**Siegfried Sassoon**



## **CONTRIBUTIONS and CONTENT**

**DONATIONS** may be payable by cheque, please post to:

Attn. Adrienne,

All Saints Church, Church Close, North Baddesley SO52 9EQ

made out to **Ampfield PCC** and on the reverse please specify:  
**‘THE MESSENGER MAGAZINE’.**

Or paid directly:

Sort code: 30-92-94 Account No: 01254722

Account Name: St Marks Church PCC

Reference: Magazine

## **ADVERTISING**

Please send to: **Kate McCallum** at

[Kathleen.mccallum@icloud.com](mailto:Kathleen.mccallum@icloud.com)

Application for designs and rates for both commercial and charity advertisements will be agreed before submitting copy/drafts for inclusion as JPEGs in high resolution not PDFs or for any graphic design work that you may require to be published. The quality, copyright and content are the sole and legal responsibility of the advertiser.

The views expressed by contributors are not necessarily those of Editors or PCCs nor will they accept any liability for such. They are not responsible for any of the views, statements or opinions expressed in the contributions and any reliance placed on them by the reader is at the readers sole risk. Copyright is the legal responsibility of the contributor and not that of the editors or PCC with regard to any content. Advertisements are not endorsed or guaranteed on any product or services referred to in, or the content of, such contributions. Every care is taken on content, but possibly there could be cause for misunderstanding that was not intended.

The Child Protection Act requires that the consent of the parent or lawful guardian needs to be given.





Commission a portrait of a loved one  
or family pet. Professional artist,  
competitive pricing.  
View recent works and enquire:

[www.amandapym.com](http://www.amandapym.com)



# NIGEL GUILDER <sup>a</sup>

## FAMILY OWNED FUNERAL DIRECTORS

Nathan House, 27 Hursley Road, Chandler's Ford, SO53 2FS



Nigel Guilder Dip FDMBIFD  
Lucy Guilder Dip FD MBIFD  
Bob Metcalf MBE Dip FD  
MBIFD



**24 HOUR PERSONAL SERVICE**

**02380 262 555**

**[www.nigelguilder.co.uk](http://www.nigelguilder.co.uk)**

**Pre-paid Funeral Plans Available**



# Simplify your life with our top-rated service

UW is the only home services provider to bundle everything onto one, simple, monthly bill. That includes gas, electricity, broadband, landline, mobile and insurance.

**And because we're Which? Utilities Brand of the Year 2020, you know you'll be in good hands.**



**My name is Natalie and I help people save money on their boring old bills - for FREE. You may not have heard of Utility Warehouse before - but we've actually been around for over 24 years! We are a multi award winning British company with award winning customer service and a UK call centre.**

**Find out more...Natalie Day**  
**natalie@dropintheocean.co.uk 07887602483**

Here for all of your grave care needs



*The Graveside Sisters*

Head stone cleaning, Letter re-painting  
Weeding, Tidying and General care.

Tel 07810111592 or 07810810476

Email... Emma@thegravesidesisters.com

Visit.. [www.thegravesidesisters.com](http://www.thegravesidesisters.com)

Facebook.. [www.facebook.com/TheGraveSideSisters](http://www.facebook.com/TheGraveSideSisters)

## Dave Butler Fencing & Gates

For all your fencing  
requirements,  
Decking solutions also provided

Tel: 01794 522212

Mob: 07747 624967

email: dave@fencing-gates.co.uk

## AMPFIELD PARISH COUNCIL

**Kate Orange**  
Clerk to Council

2 The Square  
Braishfield Road, Braishfield  
Romsey SO51 0PQ

Tel: 07922 118840

email: clerk@ampfield.org.uk

[www.ampfield.org.uk](http://www.ampfield.org.uk)

## AMPFIELD to ROMSEY DIAL A RIDE

A transport service for disabled or elderly people who cannot use ordinary buses. We provide a door to door service using specially adapted vehicles, for shopping trips and other individual transport needs.

**For details Tel: 01264  
356808**

**[www.tvcs.org.uk](http://www.tvcs.org.uk)**



Cartoons by Nigel for the Messenger



01794 513393 122 The Hundred, Romsey  
02380 3588605 Rownhams Road, North Baddesley  
Personal Attention from Simon & Michael Peace, and Giles Sadd  
*24hr Service, Private Chapel of Rest  
Monumental Masonry Service  
Pre-payment plans available*

Computer Problems?	
	PC, Mac, iPads, Screens Windows XP 10 & add Menus Virus Fixes & Tune up Data recovery, Printing Broadband & Networking
Independent Impartial Advice Home Visits	
Laptops, Macs & Phones	PC's, viruses, Home setups
Call <b>Colin:</b> <b>01962 713890</b> <b>07727 481220</b>	Call <b>Gerry:</b> <b>01962 712674</b> <b>07900 845814</b>
10% off labour with Parish Magazine over	

## AMPFIELD VILLAGE HALL

Bookings taken for private parties and receptions. Clubs and other organisations are welcome.

Good parking.

**For bookings ring  
Martin Hatley**

**Tel: 07970 501050**

**Email:- [villagehall@ampfield.org.uk](mailto:villagehall@ampfield.org.uk)**

\*\*\*\*\*

\* **Good Roots Garden Services** \*

\* I have 20 years experience in horticulture and specialise in garden maintenance, small landscaping & repair works' I can either work with you to improve your outside space or offer a 'spruce up' service. \*

\* Please get in touch so I can come and chat with you about what your garden needs with a free, no-obligation visit. \*

\* Tel Pete Hale on :07749299227 or email [pete@goodrootsgardening.co.uk](mailto:pete@goodrootsgardening.co.uk) \*

\*\*\*\*\*

**SAMARITANS**

## Talk to us

**If things are getting to you. Any time you like, in your own way - about whatever is on your mind.**

• **Free to phone 116 123**

**Email: [jo@samaritans.org](mailto:jo@samaritans.org)**

• **Visit us: 13 Upper High Street, Winchester SO23 8UT**



**JO HOOPER**  
HONS) RNMH REG.  
MBACP

**Counsellor, Psychotherapist, Coach**

Currently working online  
[counselling@jlhooper.co.uk](mailto:counselling@jlhooper.co.uk)  
<https://www.paranimo.co.uk/therapists/jo-hooper/profile>  
*(click link for my video)*  
 023 8097 2243

WORKING WITH YOUR EMOTIONS, THOUGHTS  
AND FEELINGS

**CONTACT ME FOR AN INFORMAL CHAT TODAY**



**Stroud School, Romsey**  
King Edward VI Preparatory School

**Forever Undaunted**  
creative heart

A traditional prep school with a  
[www.stroud-kes.org.uk](http://www.stroud-kes.org.uk)